

Sentinel Protection Installer Version 7.1.1 (Windows) ReadMe

This readme provides an overview of the Sentinel™ Protection Installer, its installation and a few tips on using the related components (such as, the Sentinel License Monitor and the driver configuration program).

Who Should Read This Document?

This readme is for users who want to install the Sentinel System Driver and/or Sentinel Protection Server using the Sentinel Protection Installer setup program.

Developers who wish to integrate these components in their Windows Installer-based setups should refer to the Sentinel Protection Installer Help.

Product Overview

Sentinel Protection Installer is an integrated installer of the Sentinel System Driver and Sentinel Protection Server.

Sentinel System Driver is the device driver for the Sentinel keys (Windows platforms). For network applications, Sentinel Protection Server is also required.

Upgrade Information

For Customers Using Sentinel SuperPro or Combo Installer

- The *Combo Installer* has now been renamed as *Sentinel Protection Installer*.
- The *SuperPro™ Server* has been renamed as *Sentinel Protection Server*.
- Both the Sentinel Protection Installer and Sentinel Protection Server are backward-compatible and will replace their earlier installations.
- Monitoring Tool—a stand-alone Windows application that displayed information about the SuperPro Servers running in a subnet, keys and licenses—has been replaced by Sentinel License Monitor. However, Sentinel License Monitor has few differences in the functionality. For details, please refer to “About Sentinel License Monitor” on page 4.

General Upgrade Information

The following points are useful if you are installing Sentinel Protection Installer for the first-time on a system:

- When you run the setup program, it will automatically update your version of the Windows Installer (to version 2.0) if necessary. It will not provide any prompt before doing this. If you are not sure you want to update the Windows Installer, do not run this program.
- If you have upgraded from Windows 98 to 2000 or XP, you must first uninstall Sentinel Protection Installer using its *setup.exe* (and not through the **Add/Remove Programs** option in **Control Panel**), and then reinstall it.

Installation

This section contains details regarding the installation.

Platforms Supported

- This installer can be run on Microsoft Windows 95/98/ME/NT/2000/XP/Server 2003.
- Sentinel System Driver version 7.1.1 is supported on Windows 95/98/ME/2000/XP/Server 2003/NT. However, Sentinel USB driver is not supported on Windows NT 4.0.

Sentinel System Driver for USB keys is Microsoft Windows Hardware Quality Labs (WHQL) certified for Windows 2000, XP and Server 2003.
- Sentinel Protection Server version 7.1.1 is supported on Windows 95/98/MENT/2000/XP/Server 2003 and Novell NetWare (version 4.2 and 5.0). Please note that Sentinel Protection Installer does not install the protection server for Novell platforms.

Note: Installing on Novell NetWare

If you want to access the Sentinel keys attached to a Novell NetWare system, ask your software vendor to deploy *SPNNWSRV.NLM* on your system. Sentinel Protection Server has a built-in Sentinel Driver that allows you to directly communicate with parallel keys (the USB keys are not supported on Novell).

On Which System I Should Run This Installer

You must run this installer on the system where the key is to be attached. This can be a stand-alone system or a network system (and multiple applications in the subnet access the keys concurrently).

Installation Notes

Note: Administrator privileges required for installing this software

In order to set up this software on Windows NT-based platforms, you must have Administrator privileges.

Double-click the *setup.exe* provided with this product to launch the installer. Please follow the on-screen instructions to complete the installation.

The Installed Directory Structure

The Sentinel Protection Server and Sentinel System Driver files are installed at the locations explained below.

Note: Do not move the files

Do not move any of the files installed or the files that are created subsequently at these locations (such as the *sntlpass.dat* file which is generated for canceling a license):

Path	Description
<OS Drive>\Program Files\Common Files\SafeNet Sentinel\Sentinel System Driver	Contains <i>SetupSysDriver.exe</i> (the driver configuration program) and few driver-related files.
<OS Drive>\Program Files\Common Files\SafeNet Sentinel\Sentinel Protection Server	<p>On Windows 9x systems:</p> <ul style="list-style-type: none"> ❑ The \Win9x directory is created, which contains the Sentinel Protection Server's executable (<i>spnsrv9x.exe</i>), the Sentinel License Monitor files in the <i>root</i> directory, and the files for the cancel license module ❑ <i>SPNSrvStop.exe</i> <p>On Windows NT-based systems:</p> <ul style="list-style-type: none"> ❑ The \WinNT directory is created, which contains the Sentinel Protection Server's executable (<i>spn-srvnt.exe</i>), the Sentinel License Monitor files in the <i>root</i> directory, and the files for the cancel license module. ❑ <i>loadserv.exe</i> ❑ <i>SPNSrvStop.exe</i>



WARNING!

Make sure that *root* directory and its files are neither moved or deleted. This directory must co-exist with the Sentinel Protection Server executable on a system.

Tips on Using Various Options

This section contains tips on using the various applications and options that might be of help while you use Sentinel System Driver and/or Sentinel Protection Server:

About Sentinel License Monitor

Sentinel License Monitor shows the details of the Sentinel UltraPro and SuperPro keys attached to a system and clients accessing them, via a Web browser. It is a convenient way to view and track the license activity and analyze application usage. You can view the following details about the keys connected to a system:

- Serial number, part number and hard limit of the key.
- Track how many licenses are currently in use.
- View the highest number of licenses issued by a key.
- Cancel the license issued to clients.
- Monitor the number of time-outs—the sessions that collapsed without properly releasing the license—recorded by the protection server for clients using licenses from a key.
- Details of the client (such as, the user name, login time, and client process ID) who have currently obtained the license(s) from the key.

Prerequisites for Launching the Sentinel License Monitor

Here are the specific requirements:

- Make sure that the Sentinel Protection Server version 7.1.0 or later is running on the system where the key is attached.
- The client must have Java 2 Runtime Environment (JRE) 1.4.2 or higher. If it does not already exist, you will be prompted for downloading it.
- The client must be running Internet Explorer version 5.0 (or higher) or Netscape Navigator version 4.6 (or higher).

Steps for Launching the Sentinel License Monitor

1. Open the Web browser on the system (Internet Explorer 5.0 or higher and NetScape Navigator version 4.0 or higher).
2. In the **Address Bar**, type the name or IP address of the system (where the hardware key is attached and protection server is running) in the following format:

`http://IP address (or system name):HTTP port number.`

For example,

`http://198.168.100.254:6002`

Press the **Enter** key. The Sentinel License Monitor Web page is displayed.

Canceling a License

If desired, a system administrator can cancel the licenses issued to the clients from a key. This need might arise in situations when some other privileged client needs a license or an application terminates without releasing the license acquired.

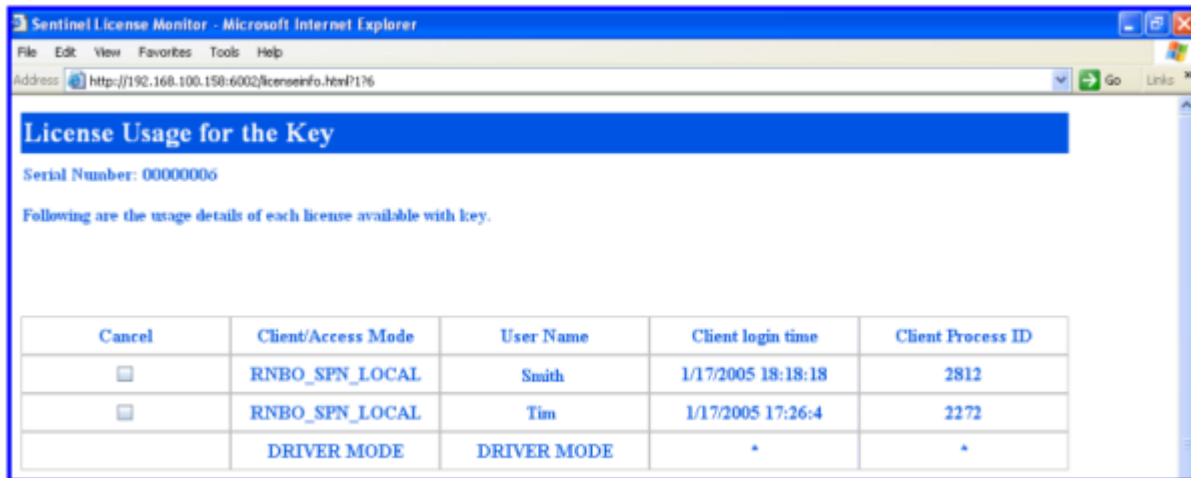
Please follow the steps given below to cancel the licenses in the Sentinel License Monitor:

1. On the system where Sentinel Protection Server is installed, run the *PwdGenUtility.exe* to generate the *sntlpass.dat* file. Do remember the password specified as it will be required for authenticating the cancel license request (see step 6).
2. Restart the Sentinel Protection Server.
3. Launch the Sentinel Licenses Monitor using the steps described in the “Steps for Launching the Sentinel License Monitor” on page 4. The key information page will appear.

Keys#	Key Type	Serial Number	Part Number	Hard Limit	Licenses-In-Use	Highest Used	Time-Outs
1	UltraPro	0x00000006	SXRB06430	5	3	3	0
2	UltraPro	0x00010006	UXRB11149	5	0	0	0
3	UltraPro	0x00000011	UXRB11234	10	0	0	0
4	SuperPro	0x00000006	*	3	0	0	0

The Key Information Page

4. Select the key whose licenses are to be canceled. The license usage page will appear.



The License Information Page

5. Select the **Cancel** check box(es) for the licenses to be canceled. You can cancel up to 10 licenses at a time.
6. Click the **Cancel License Session** button given at the bottom of the page. A dialog box will appear prompting you to provide the same password specified in step 1.
7. Click **OK**. The key information page will appear.
8. You can verify for the license(s) canceled by launching the license usage page.

Note: Unable to cancel a license

The Sentinel License Monitor will not prompt you for any errors encountered while canceling a license. However, a license will not be canceled if there is excessive traffic in the network or you specified a wrong password in step 6.

About *loadserv.exe*

Using *loadserv.exe* you can:

- Install and remove the Sentinel Protection Server service.
- Set the server's log file locations. There are two separate log files, one for errors and one for processed transactions. If no locations are set for these log files, no logging will take place.
- Set the port used by the Sentinel Protection Server to launch the Sentinel License Monitor. You may need to do this in case the default HTTP port (6002) is being used by some other Web server.

About *SPNSrvStop.exe*

This utility is provided to stop the Sentinel Protection Server running on a Windows system.

Using the Driver Configuration Program

Sentinel System Driver contains a configuration program called *SetupSysDriver.exe* to allow you configure the driver, if necessary. It also contains an option that allows you to call the original installer to modify, repair, or remove the installation.

The driver configuration program—*SetupSysDriver.exe*—is located at <OS Drive>\Program Files\Common Files\SafeNet Sentinel\Sentinel System Driver. Double-click it to run. When you run it, a window will come up giving you a few configuration choices.

If you only have the USB driver installed, the configuration program will not detect the USB driver if no USB key is plugged in. This is because the plug-n-play USB driver is only loaded when a key is plugged in. This differs from the parallel driver, which is always loaded after it is installed, so the configuration program should always detect its presence.

Add/Repair/Remove Installation

If you select this option, the installer will run the Windows Installer and allow you to modify/repair/remove the installation. This option is the same as going to the **Add/Remove Programs** option.

Configure Driver

The **Configure Driver** option allows you to manually configure the parallel ports used by the Sentinel System Driver. In general, the driver is able to automatically detect your parallel ports and does not need to be set up manually. However, in some cases manual modifications are required. Any changes to the ports could potentially cause the driver to fail. For more information on changing the ports and various options, click the **Help** button.

Tip: Sentinel System Driver automatically detects the user-configured, PCI parallel port cards
A feature has been added to the Sentinel System Driver for Windows NT-based operating systems that will allow it to recognize add-in PCI parallel port adapters that have been configured by the operating system. You need not enter the port addresses assigned to those adapters.

Modify/Repair/Removal Instructions

If you have installed Sentinel Protection Installer using its *setup.exe* or the Sentinel Protection Installer's executable, then use the following instructions to repair/remove it on a Windows NT-based operating system:

1. Go to **Settings > Control Panel** from the **Start** menu.
2. Double-click the **Add/Remove Programs** to obtain a list of software programs installed on your system. Look for the Sentinel Protection Installer's entry.
3. Click **Remove** and follow the on-screen instructions. A message may appear asking you to reboot your system.

Getting Help

If you have questions, need additional assistance, or encounter a problem, please contact your software provider.

Copyright © 2005, SafeNet, Inc. (Baltimore)
All rights reserved.

SafeNet, Sentinel, SuperPro, and UltraPro are either registered trademarks or trademarks of SafeNet, Inc. Microsoft, Windows, Windows NT, Windows 2000, Windows XP, Windows 2003 and Internet Explorer are either trademarks or registered trademarks of Microsoft Corporation in the United States and other countries. Java is a trademark of Sun Microsystems, Inc. in the United States and other countries. All other product names referenced herein are trademarks or registered trademarks of their respective manufacturers.

July 2005, Revision A